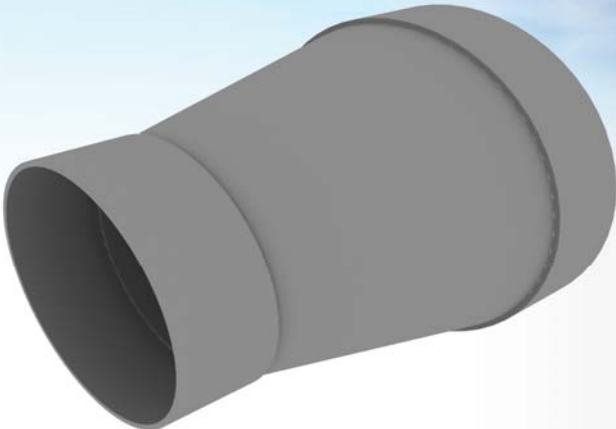




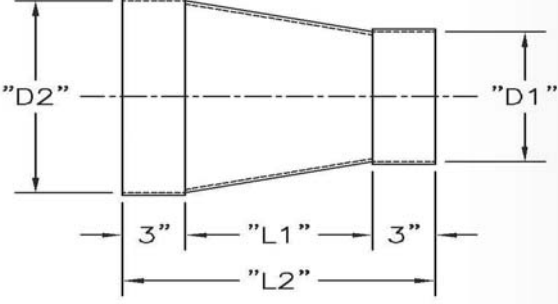
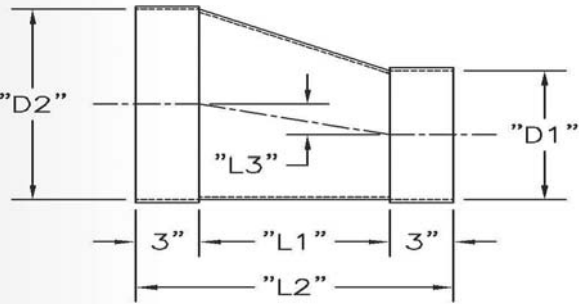
## CONCENTRIC AND ECCENTRIC REDUCER



**AVAILABLE MATERIALS OF CONSTRUCTION: TYPE II PVC, POLYPROPYLENE, CPVC, DUAL LAMINATE, FRP, AND PVDF**

**NOTES:**

1. STANDARD COLLAR CONNECTIONS SHOWN / FLANGED CONNECTIONS ARE AVAILABLE UPON REQUEST
2. CUSTOM DIAMETERS AND LENGTHS ARE AVAILABLE UPON REQUEST
3. FIRESIST™ FM APPROVED FITTINGS ARE AVAILABLE UPON REQUEST



ECCENTRIC	
AMOUNT OF REDUCTION "D1" MINUS "D2"	"L1" MINIMUM LENGTH
2" AND LESS	6"
3" TO 4"	12"
5" TO 6"	18"
7" TO 8"	24"
9" TO 11"	30"
12" TO 14"	36"

CONCENTRIC	
AMOUNT OF REDUCTION "D1" MINUS "D2"	"L1" MINIMUM LENGTH
3" AND LESS	6"
4" TO 6"	12"
7" TO 9"	18"
10" TO 13"	24"
14" TO 16"	30"
17" TO 19"	36"

